

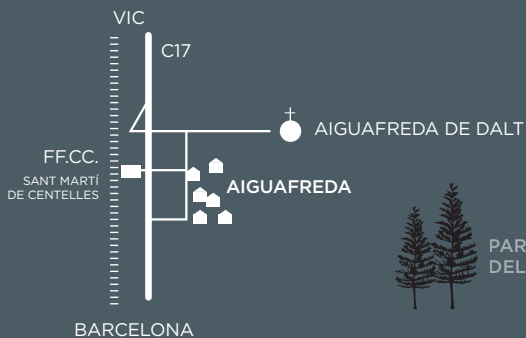
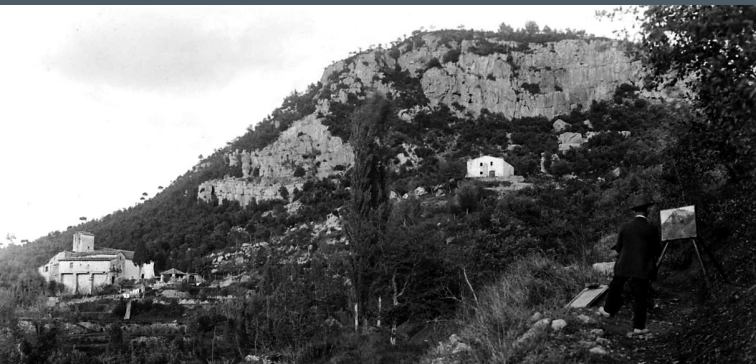


Aiguafreda de Dalt

SANT MARTÍ DEL CONGOST

Origin of Aiguafreda

On 5 August 898, Gotmar, Bishop of Osona, consecrated the church of Sant Martí at the request of her niece Abbess Emma, daughter of Wilfred the First, Count of Barcelona. The church would be the heart of Aiguafreda parish until the end of the 19th century, when the church of Santa Maria at the neighbourhood of Les Ferreries –the former name of contemporary Aiguafreda– assumed the role of parish church.



PARC NATURAL
DEL MONTSENY



AJUNTAMENT D'AIGUAFREDA

Pl. Ajuntament, 1 08591 Tel. 93 844 22 53 | Fax 93 844 21 85
info@aiguafreda.cat | www.aiguafreda.cat